



Quick Start Guide

Introduction

Conext™ Insight 2.0 is a cloud-based platform for end users and installers to remain connected to and manage a portfolio of customer sites. It is a simple tool for users to track their system performance locally and remotely.

Scope

This document includes setup and configuration steps for Conext Insight 2.0 so that you can start monitoring your Conext Gateway sites. Refer to the Conext Gateway Owner's and Installation guides for detailed information about Conext Gateway settings (go to <https://solar.schneider-electric.com/product/conext-gateway/> > Downloads).

DANGER

HAZARD OF ELECTRIC SHOCK, EXPLOSION, ARC FLASH, AND FIRE

This document is in addition to, and incorporates by reference, the relevant product manuals for Conext Insight 2.0. Before reviewing this document, you must read the relevant product manuals. Unless specified, information on safety, specifications, installation and operation is as shown in the primary documentation received with the product. Ensure you are familiar with that information before proceeding.

Failure to follow these instructions will result in death or serious injury.

Exclusion for Documentation

UNLESS SPECIFICALLY AGREED TO IN WRITING, SELLER; (A) MAKES NO WARRANTY AS TO THE ACCURACY, SUFFICIENCY OR SUITABILITY OF ANY TECHNICAL OR OTHER INFORMATION PROVIDED IN ITS MANUALS OR OTHER DOCUMENTATION; (B) ASSUMES NO RESPONSIBILITY OR LIABILITY FOR LOSSES, DAMAGES, COSTS OR EXPENSES, WHETHER SPECIAL, DIRECT, INDIRECT, CONSEQUENTIAL OR INCIDENTAL, WHICH MIGHT ARISE OUT OF THE USE OF SUCH INFORMATION. THE USE OF ANY SUCH INFORMATION WILL BE ENTIRELY AT THE USER'S RISK; AND (C) REMINDS YOU THAT IF THIS MANUAL IS IN ANY LANGUAGE OTHER THAN ENGLISH, ALTHOUGH STEPS HAVE BEEN TAKEN TO MAINTAIN THE ACCURACY OF THE TRANSLATION, THE ACCURACY CANNOT BE GUARANTEED. APPROVED CONTENT IS CONTAINED WITH THE ENGLISH LANGUAGE VERSION WHICH IS POSTED AT <https://conextinsight2.schneider-electric.com>.

Conventions Used

Section Step Safety Direction Expand Label

Contact Information

Schneider Electric Solar Inc.

3700 Gilmore Way, Burnaby B.C., V5G 4M1, Canada

<https://solar.schneider-electric.com/>

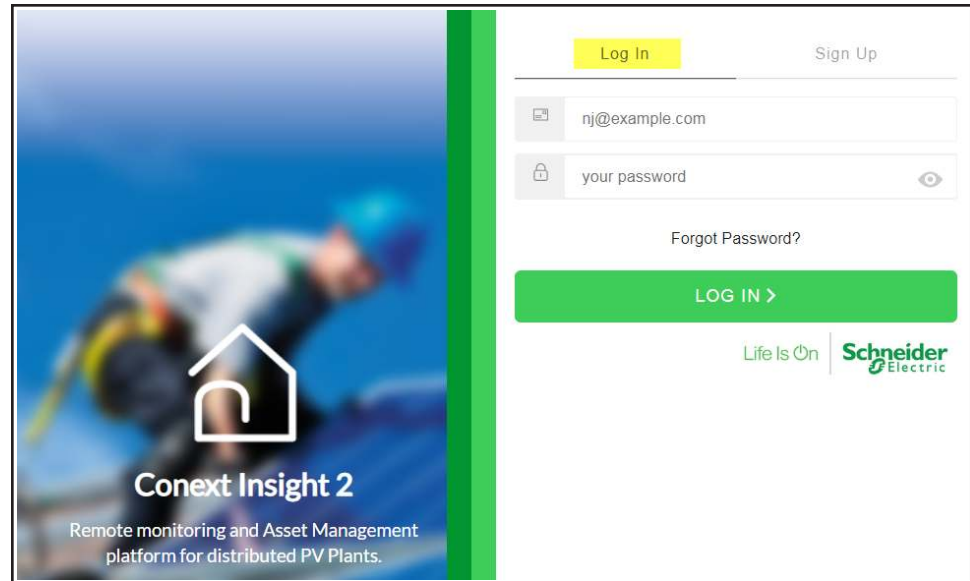
Submit your support request online at: <https://solar.schneider-electric.com/tech-support/netsuite/>

Logging in to the Conext Insight 2.0 Web Portal

1. Open a web browser.
2. Enter the following address to access the Conext Insight 2.0 web portal:
<https://conextinsight2.schneider-electric.com>
3. Select **Sign Up**, complete the form, and then click **Sign Up**.
An authentication email is sent to you.

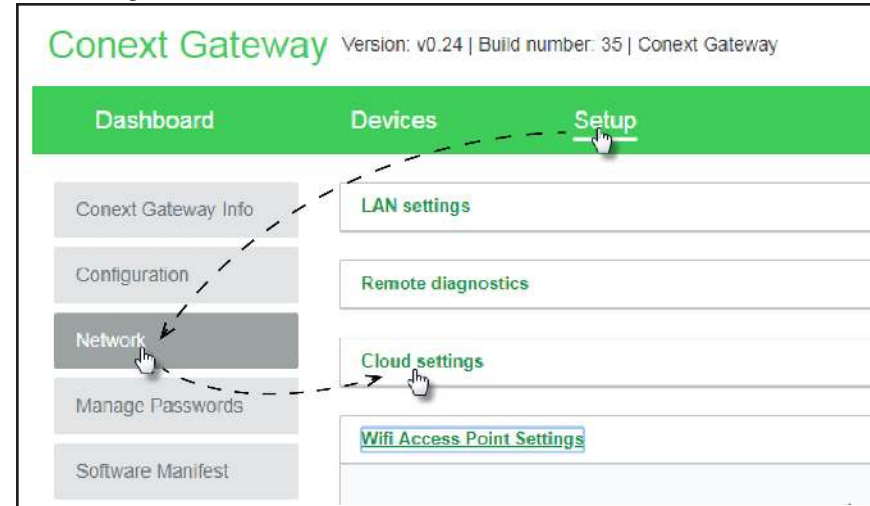
The screenshot shows the 'Sign Up' page of the Conext Insight 2.0 web portal. On the left, there is a banner image of a solar installer with the text 'Conext Insight 2 Remote monitoring and Asset Management platform for distributed PV Plants.' The main form on the right includes fields for: Email (example: nj@example.com), Password (with a visibility toggle), Full Name, Organization Name, Phone Number (with country code), Address, City, State, and Zip Code. There is a 'Log In' link and a yellow 'Sign Up' button at the top right. At the bottom, there is a checkbox for 'I have read understood and agree with the Terms Of Use and the Data Privacy Statement' and a green 'SIGN UP >' button.

- To finalize your registration, go to the authentication email, and then click **Verify Your Account**.
- From the login portal, select **Log In**, enter your credentials, and then click **Log In**.



Adding a New Site

- Verify that the Conext Gateway cloud connection is enabled and that data is being pushed to the cloud:
 - From the Conext Gateway web portal home page, go to **Setup > Network > Cloud settings** and verify that the cloud connection status indicator is green. If it is not green, contact Schneider Electric.



- From the Conext Insight 2.0 web portal home page, click **New Site**.
- In the **New Site** form, fill in all required fields and then click **Create**.
NOTE: The latitude and longitude can only be added manually.

- Configure the Conext Gateway ID for the new site:
 - To find the ID, go to the Conext Gateway web portal home page > **Setup > Network > Cloud settings > Uniform Resource Name**.
Example: `urn:dev:opm:xxxxx-Combox-xxxxx`
 - From the Conext Insight 2.0 home page, go to **Configuration** and select the new site from the **Device List**.
 - Under **Edit Site Device**, select **Devices** and enter the Conext Gateway ID.



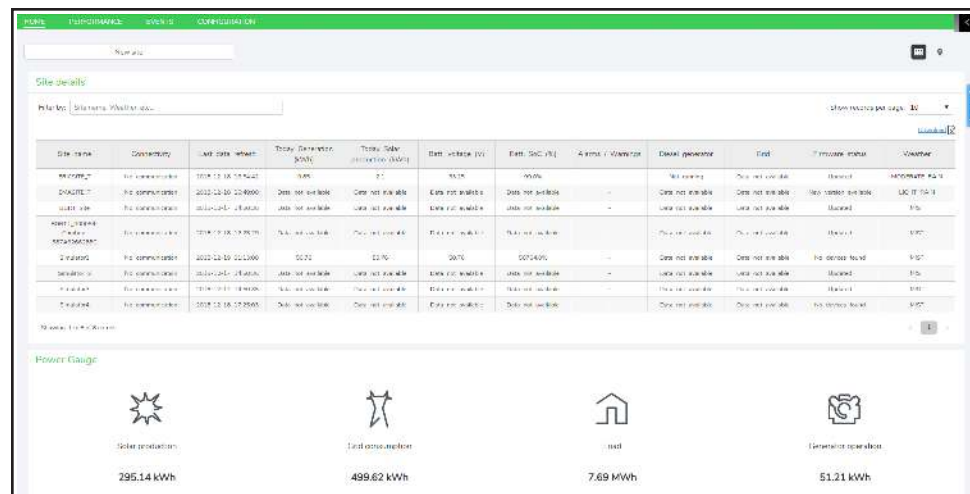
- Enter the Conext Gateway serial number. The serial number can be found on the Conext Gateway product label. Enter the serial number exactly as it appears on the product.

NOTE: Site administrators can add new users to the site from **Configuration > User rights > Add a user**.

Navigating the Conext Insight 2.0 Web Portal

Home

From the Home tab, you can view your site portfolio and site details, such as site and energy source status, recent power generation, solar production, active alarms, and weather information.

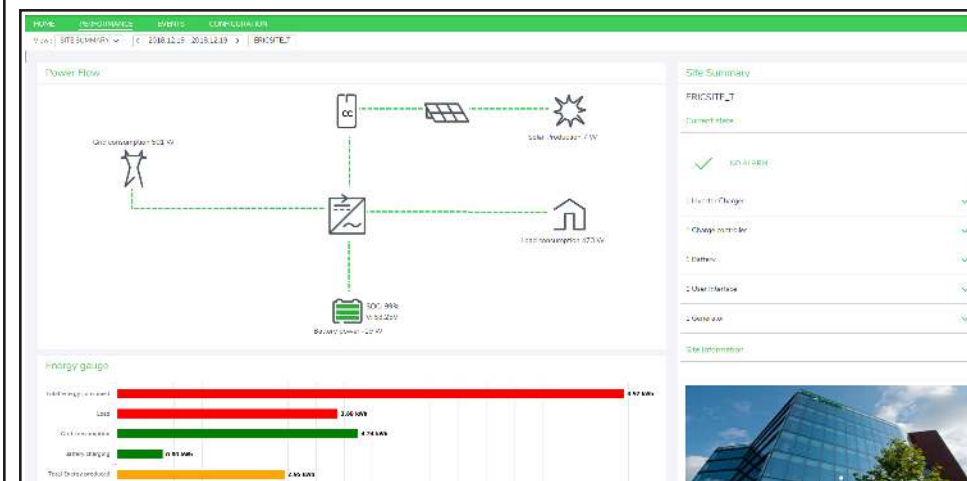


Performance

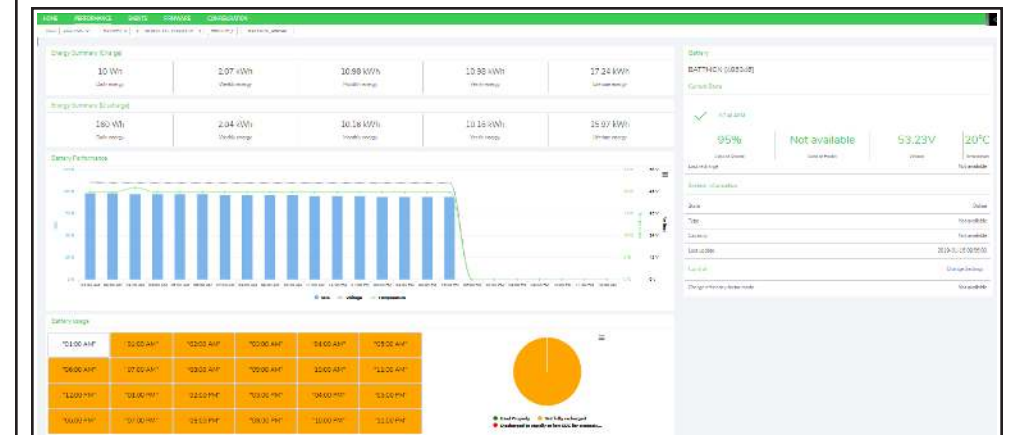
From the Performance tab, you can follow the performance of your installation. Use the **View** drop-down menu to switch between the views described below.



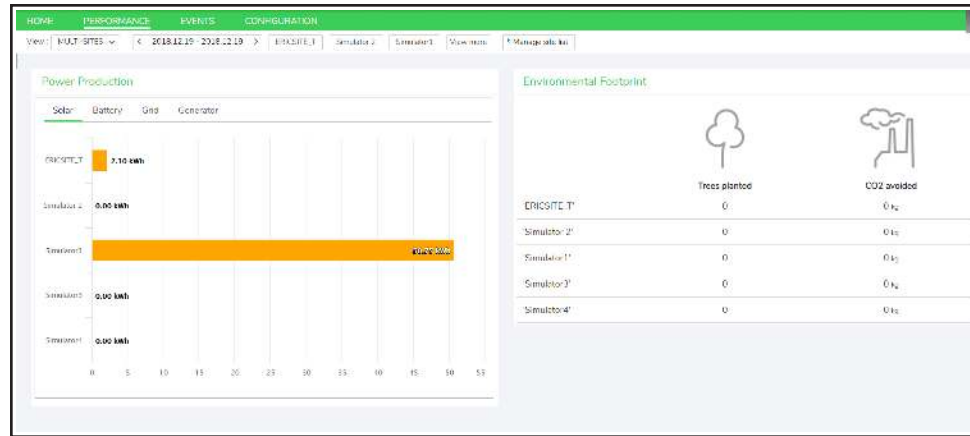
Site Summary: This view provides a global analysis of the PV plant performance through a power flow diagram. Use the selection arrows to select a site and a date to see the active alarms and a summary of the energy consumption and production for a period of time.



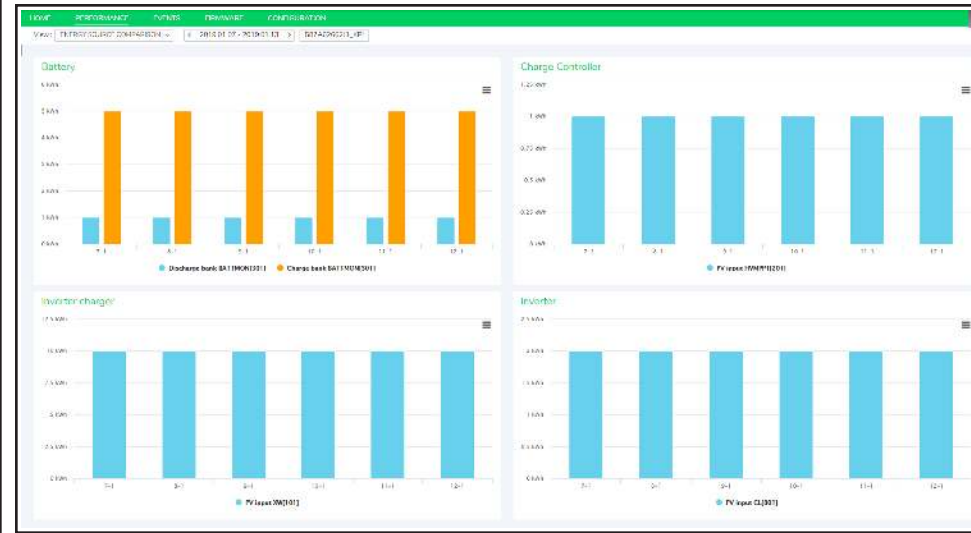
Energy Source List Analysis: This view displays performance data, such as energy source details and active alarms, for the power conversion devices on a site, from the Array Box to the connection point.



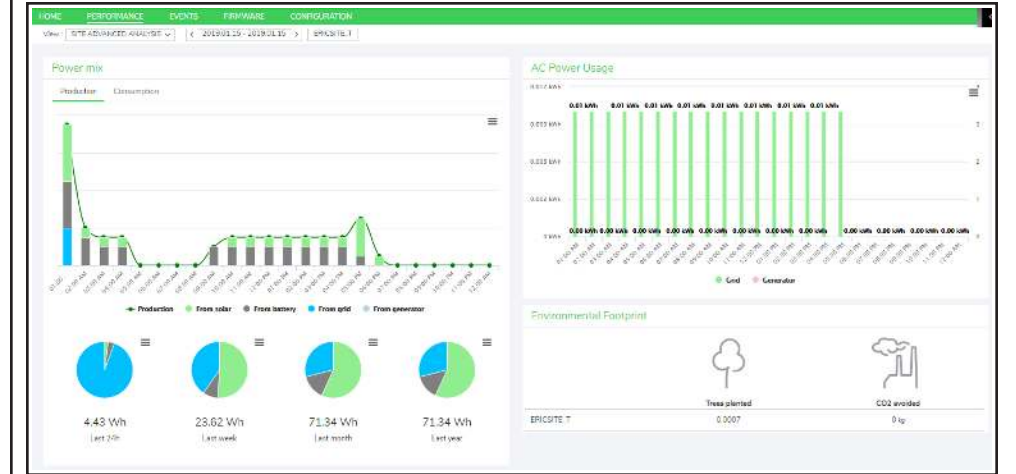
Multi-Sites: This view allows you to compare performance indicators between the selected solar installations.



Energy Source Comparison: This view compares the performance of energy sources on a specific site, using electrical measurements and other indicators.



Site Advanced Analysis: This view provides an advanced analysis of the solar installation's performance. The financial and environmental impact information in this view can help you evaluate your return on investment.



Events

From the Events tab, you can view all active and historical events, alarms, and warnings for a selected site.

Date	Time	Type	Device	Message ID	Error code	Error	Description	Status
2018-12-18	16:54:47	Warning	7076	10001	10001	System Error: Inverter	2018-12-18 16:54:47	Warning
2018-12-18	16:54:47	Warning	7076	10001	10001	System Error: Inverter	2018-12-18 16:54:47	Warning
2018-12-18	16:54:47	Warning	7076	10001	10001	System Error: Inverter	2018-12-18 16:54:47	Warning
2018-12-18	16:54:47	Warning	7076	10001	10001	System Error: Inverter	2018-12-18 16:54:47	Warning
2018-12-18	16:54:47	Warning	7076	10001	10001	System Error: Inverter	2018-12-18 16:54:47	Warning
2018-12-18	16:54:47	Warning	7076	10001	10001	System Error: Inverter	2018-12-18 16:54:47	Warning
2018-12-18	16:54:47	Warning	7076	10001	10001	System Error: Inverter	2018-12-18 16:54:47	Warning
2018-12-18	16:54:47	Warning	7076	10001	10001	System Error: Inverter	2018-12-18 16:54:47	Warning
2018-12-18	16:54:47	Warning	7076	10001	10001	System Error: Inverter	2018-12-18 16:54:47	Warning
2018-12-18	16:54:47	Warning	7076	10001	10001	System Error: Inverter	2018-12-18 16:54:47	Warning

Firmware

From the Firmware tab, you can view the firmware status and upgrade the firmware for a site.

Site name	Notification	Firmware status	Firmware details
ERICSITE 1	OK	Updated	Firmware details
EM5SITE 1	OK	Updated	Firmware details
DSPT Site	OK	Updated	Firmware details
DSPT1-000954-Combox-567A928626DC	OK	Updated	Firmware details
Simulator 1	OK	Updated	Firmware details
Simulator 2	OK	Updated	Firmware details
Simulator 3	OK	Updated	Firmware details
Simulator 4	OK	Updated	Firmware details
INVERTOR-Box	OK	Updated	Firmware details
MPPT-Unit	OK	Updated	Firmware details

Configuration

From the Configuration tab, you can remotely view and change parameters at the site level, or at the individual energy source level. You can also create a new site or delete an existing one.

