

# Conext XW+

## hybrid inverter/charger

One solution for global power needs

### Product at a glance

Conext™ XW+ is an adaptable single-phase and three-phase inverter/charger system with grid-tie functionality and dual AC power inputs. Compatible solar charge controllers, monitoring, and automated generator control modules enable further compatibility. From a single Conext XW+ unit to clusters up to 76.5 kW, the Conext XW+ is a scalable system that allows for the integration of solar capacity as required. Adaptable and scalable, the Schneider Electric Conext XW+ system is a complete solution for grid-interactive and off-grid, residential and commercial, solar and backup power applications.



### Conext XW+

#### Higher return on investment

- Excellent load starting with high 30 minute and 5 second power
- Performs in hot environments up to 70°C
- Intelligent functionality enables solar prioritization, load shifting, peak shaving, and assists small generators with heavy loads
- Backup power with grid-tie functionality converts external DC power to AC power to export to the utility grid

#### Designed for reliability

- Extensive quality and reliability testing
- Highly accelerated life testing
- Globally proven and recognized field performance

#### Flexible

- Single or three-phase off-grid systems from 7.0 kW to 76.5 kW (30 minutes rating at 25 °C)
- Supports DC-coupled and AC-coupled off-grid and grid-tie architectures
- Supports charging of lithium ion battery packs

#### Easy to service

- Field serviceable with replacement boards and spare parts
- Monitor, troubleshoot, or upgrade firmware with Conext ComBox™

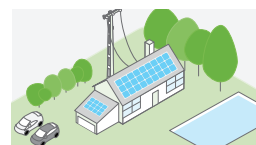
#### Easy to install

- System configures quickly into compact, wall-mounted system
- Integrates both grid and generator power with dual AC inputs
- Balance-of-system components integrates battery bank, solar charge controllers, and generators
- Commission the entire system with PC software tool and Conext ComBox

### Product application



Residential grid-tie solar with backup power



Self-consumption



Off-grid solar



Backup power



Community electrification

# Conext XW+ series (230 V for Australia)

Device short name	XW+ 7048 E	XW+ 8548 E
<b>Inverter AC output (standalone)</b>		
Output power (continuous) at 25°C	5000 W	6800 W
Overload 30 min/60 sec at 25°C	7000 W/9500 W	8500 W/12000 W
Output power (continuous) at 40°C	4500 W	6000 W
Maximum output current 60 seconds (rms)	40 A	53 A
Output frequency (selectable)	50/60 Hz	50/60 Hz
Output voltage	230 Vac	230 Vac
Total harmonic distortion at rated power	< 5%	< 5%
Idle consumption search mode	< 7 W	< 7 W
Input DC voltage range	40 to 64 V (48 V nominal)	40 to 64 V (48 V nominal)
Maximum input DC current	150 A	180 A
<b>Charger DC output</b>		
Maximum output charge current	90 A	140 A
Maximum AC input current	20 A	29.6 A
Output charge voltage range	40 – 64 V (48 V nominal)	40 – 64 V (48 V nominal)
Charge control	Three stage, two stage, boost, custom	Three stage, two stage, boost, custom
Charge temperature compensation	Battery temperature sensor included	Battery temperature sensor included
Power factor corrected charging	0.98	0.98
Compatible battery types	Flooded (default), Gel, AGM, Lithium ion, custom*	Flooded (default), Gel, AGM, Lithium ion, custom*
Battery bank range (scaled to PV array size)	440 to 10000 Ah	440 to 10000 Ah
<b>AC input</b>		
AC 1 (grid) input current (selectable limit)	3 – 60 A (20 A default)	3 – 60 A (20 A default)
AC 2 (generator) input current (selectable limit)	3 – 60 A (56 A default)	3 – 60 A (56 A default)
Automatic transfer relay rating/typical transfer time	60 A/8 ms	60 A/8 ms
AC input voltage nominal	230/240 V	230/240 V
AC input frequency range (bypass/charge mode)	45 – 55 Hz (default) 40 – 68 Hz (allowable)	45 – 55 Hz (default) 40 – 68 Hz (allowable)
<b>AC grid-tie output</b>		
Grid sell on AC1 (max)	4.5 kVA	6.0 kVA
Grid sell current range on AC1 (selectable range)	0 to 20 A	0 to 27 A
Grid sell voltage range on AC1	205 to 262 Vrms (auto adjust entering sell mode)	205 to 262 Vrms (auto adjust entering sell mode)
Grid sell frequency range on AC1	48 to 51 Hz (auto adjust entering sell mode)	48 to 51 Hz (auto adjust entering sell mode)
<b>Efficiency</b>		
Peak	95.8%	95.8%
<b>General specifications</b>		
Part number	865-7048-61*	865-8548-61
Application	On-grid and off-grid	Off-grid
Product/shipping weight	53.5 kg/75.0 kg	55.2 kg/76.7 kg
Product dimensions (H x W x D)	580 x 410 x 230 mm	580 x 410 x 230 mm
Shipping dimensions (H x W x D)	711 x 572 x 394 mm	711 x 572 x 394 mm
IP degree of protection	IP20	IP20
Operating air temperature range	-25°C to 70°C (-13°F to 158°F) (power derated above 25°C (77°F))	
Warranty	5 years	5 years
<b>Features</b>		
System monitoring and network communications	Available	
Intelligent features	Grid sell, peak load shave, generator support, prioritized consumption of battery or external DC energy	
Auxiliary port	0 to 12 V, maximum 250 mA DC output, selectable triggers	
Off-grid AC coupling	Frequency control	
<b>Regulatory approval</b>		
CE marked according to the following EU directives and standards		
RCM marked and compliant	AS 4777.2:2005, AS4777.3:2005 CEC Listed, EN61000-6-1, EN61000-6-3, EN61000-3-2, IEC62109-1, IEC62109-2	
<b>Compatible products</b>		
Conext Response	865-1170	
Conext XW+ Conduit Box	865-1025-01	
Conext System Control Panel	865-1050-01	
Conext Automatic Generator Start	865-1060-01	
Conext MPPT 60 150	865-1030-1	
Conext MPPT 80 600	865-1032	
Conext ComBox	865-1058	
Conext Battery Monitor	865-1080-01	
Conext Battery Fuse Combiner Box	865-1031-01	
Conext Configuration Tool	865-1155-01	

\*Firmware Version 2.04 is required for AS4777.2 (check for latest updates at [www.solar.schneider-electric.com/product/conext-xw-hybrid-inverter](http://www.solar.schneider-electric.com/product/conext-xw-hybrid-inverter))

Specifications are subject to change without notice.

**Schneider Electric**  
35 rue Joseph Monier  
92500 Rueil-Malmaison, France  
Tel: +33 (0)1 41 29 70 00

Life Is On

**Schneider**  
Electric