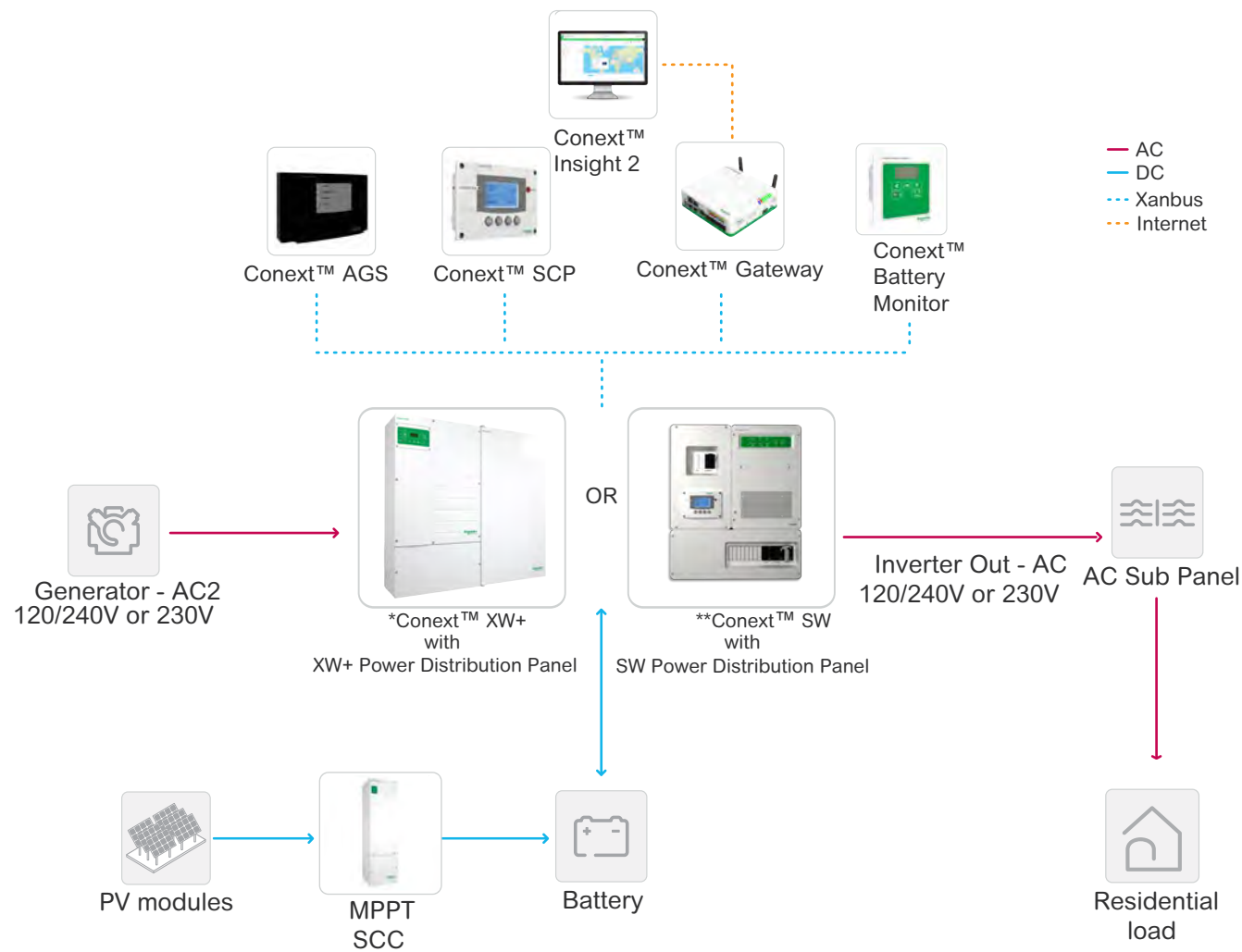


# Residential off-grid (DC coupled)



XW+ Single-phase or split-phase (120/240VAC or 230 VAC) solution with optional AGS/Generator (7.0 kW – 25.5 kW)  
 \*Up to two slave units are optional to increase power  
 SW Single-phase or split-phase (120/240VAC or 230 VAC) solution with optional AGS/Generator (2.5 kW – 8.0 kW)  
 \*\*Additional slave unit is optional to increase power