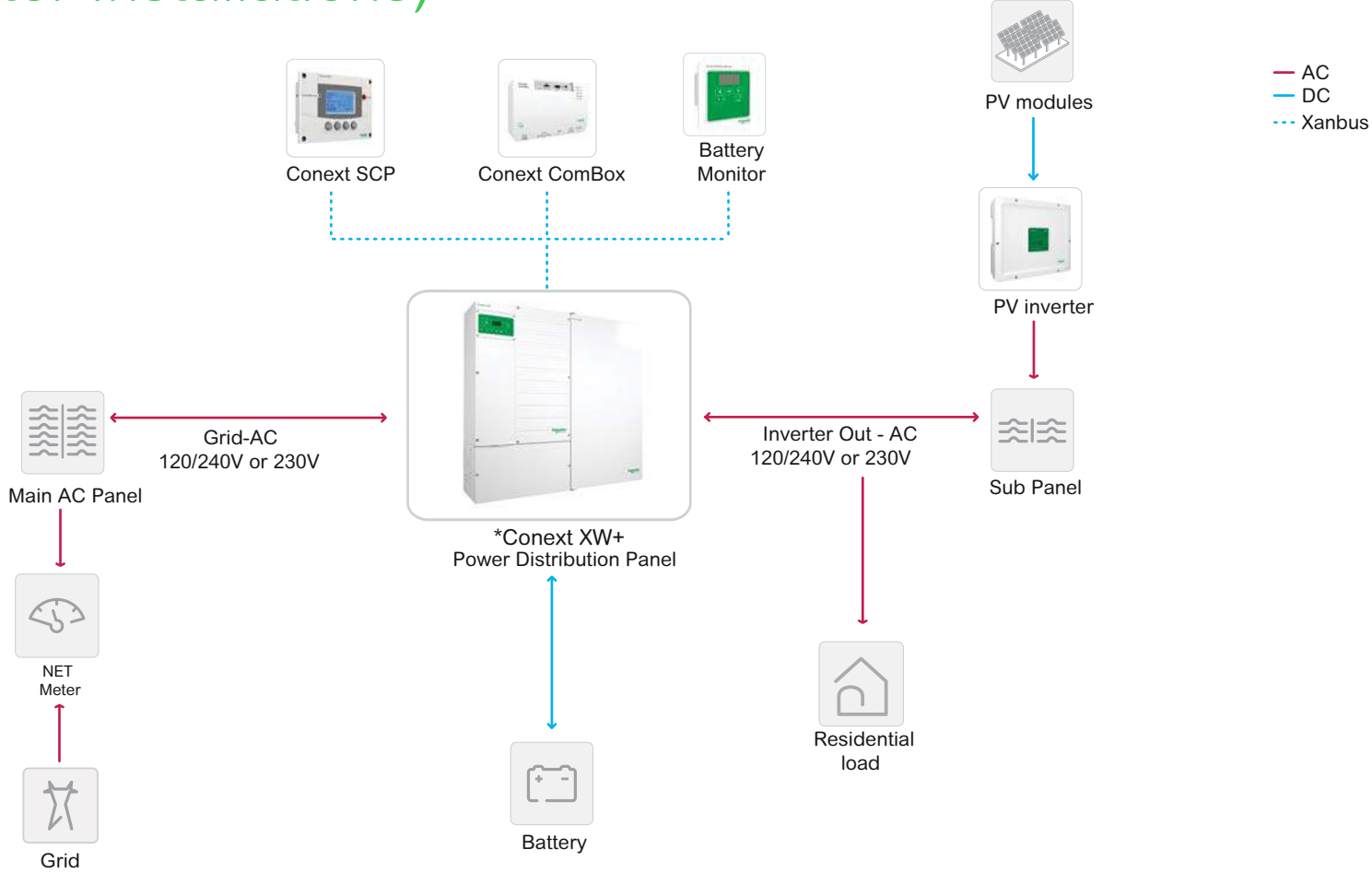


Residential grid-tie solar with backup (retrofit net meter Installations)



XW+ Single-phase or split-phase (120/240VAC or 230 VAC) solution (7.0kW – 25.5 kW)
 *Up to two slave units are optional to increase power
 The Conext XW+ inverter charger is added in front of PV inverter to provide backup power. The PV inverter is rewired from the grid connection to critical load subpanel and AC Couple is on AC Output port. With Grid Sell enabled, XW+ will export energy to the utility grid and therefore XW+ is required to be compliant with local grid export regulations. Check with local authorities to confirm compliance.
 Note: Confirm AC coupling compatibility with PV inverter manufacturer prior to installation